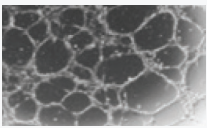




## CELLvo™ Human Cord Blood - Endothelial Progenitor Cells (hCB-EPCs)

With superior colony forming abilities, greater vessel formation, and greater angiogenic potential in vitro as well as in vivo - as compared to hUVECs - CELLvo™ hCB-EPCs are the cell of choice for researchers wanting greater control of their tissue engineering studies.



**Product number:**

**700-502**

CELLvo™ hCB-EPCs / 500,000 cells



**Product number:**

**700-502-6WP**

Vial of 500,000 CELLvo™ EPCs  
+ sleeve of five CELLvo™ Matrix  
6 well plates



**Product number:**

**700-502-T75**

Vial of 500,000 CELLvo™ EPCs  
+ sleeve of five CELLvo™ Matrix T75s



**Product number:**

**700-502-T150**

Vial of 500,000 CELLvo™ EPCs  
+ sleeve of five CELLvo™ Matrix T150s

**Product Use: NOT FOR HUMAN USE.**

This product is for research use only. Not to be used for diagnostic or therapeutic applications.

**Presentation:** > 500,000 cells per vial frozen in cryopreservation media.

**Safety Information:** Wear appropriate protective eyewear, clothing, and gloves. Handle in accordance with established bio-safety practices.

**Storage and Stability:** Store frozen in liquid nitrogen vapor.

**Cell Culture Media:** We recommend culturing CELLvo™ hCB-EPC on the CELLvo™ Matrix and cultured in appropriate cell culture media. Recommended seeding density is 5,000 cells/cm<sup>2</sup> at 37°C with a complete media change after 24 hours and 1/2 media change every 2-3 days.

